

Panoramic Glamping Super-pod 4m x 12m (- 8m) models



Larch cladding or pressed steel tiles.

Side entrance models also available.

Panoramic Glamping Super-pod 4m x 12m (- 8m) models

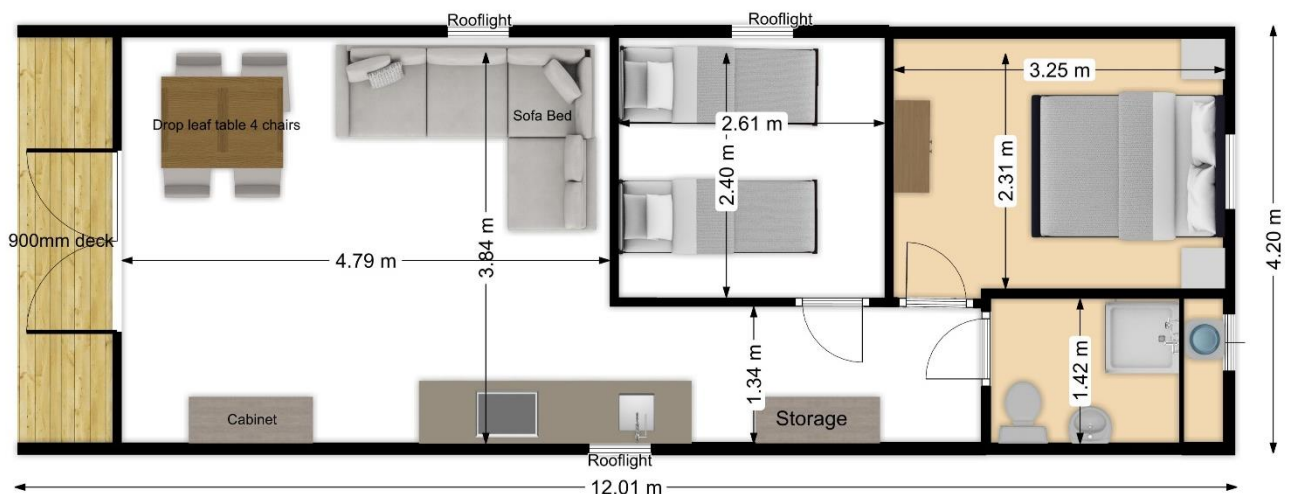
This family sized super-pod with bathroom is the largest size of our new 4m wide pods for the Hotel and Glamping market. It is aesthetically pleasing and has space for all the luxury items needed for an extra accommodation room.

A large panoramic entrance door sets off the whole experience. This 12m model has 2 bedrooms, a full bathroom and kitchenette, dining for 4 and sofas for another 2 if required. With 44sq m of internal space it takes careful planning to optimise everything.

A double bed fits into the double bedroom also allowing 2 bed side cabinets. The second bedroom (if required) has 2 single beds and a shared bedside table. A corner sofa which can also be a sofa bed offers great relaxing space. The gateleg table & 4 chairs for dining means this pod is suitable for renting as a chic hotel room or self contained accommodation. The separate bathroom area and kitchen make it a long term apartment if necessary.



Our super size pods are built with quality, longevity and a 'chic' living experience in mind!



Price £36,870 + reduced VAT & delivery (£33,450 with no furniture)

For Larch cladding add + £2,800

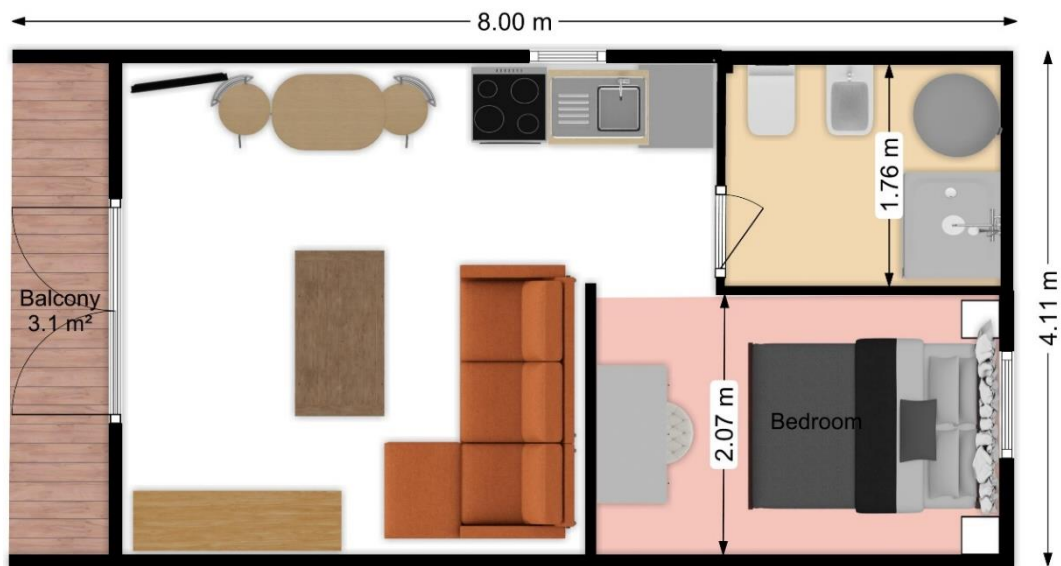
Curtains on the panoramic version are £650 + VAT extra.

Alternative layouts to suit you

Panoramic Glamping Super-pod 4m x 12m (- 8m) models

At 4.2m wide with a sofa bed for visiting family members this offers luxury glamping space for families with 'all mod cons'.

Fully equipped with sofa, double bed and dining furniture. Optional LPG for heating or all electric to suit. Layout shows added breakfast bar. The hand painted walls make the move from camping to glamping and chic complete.



Price £26,985 + reduced VAT & delivery (£25,357 with no furniture)

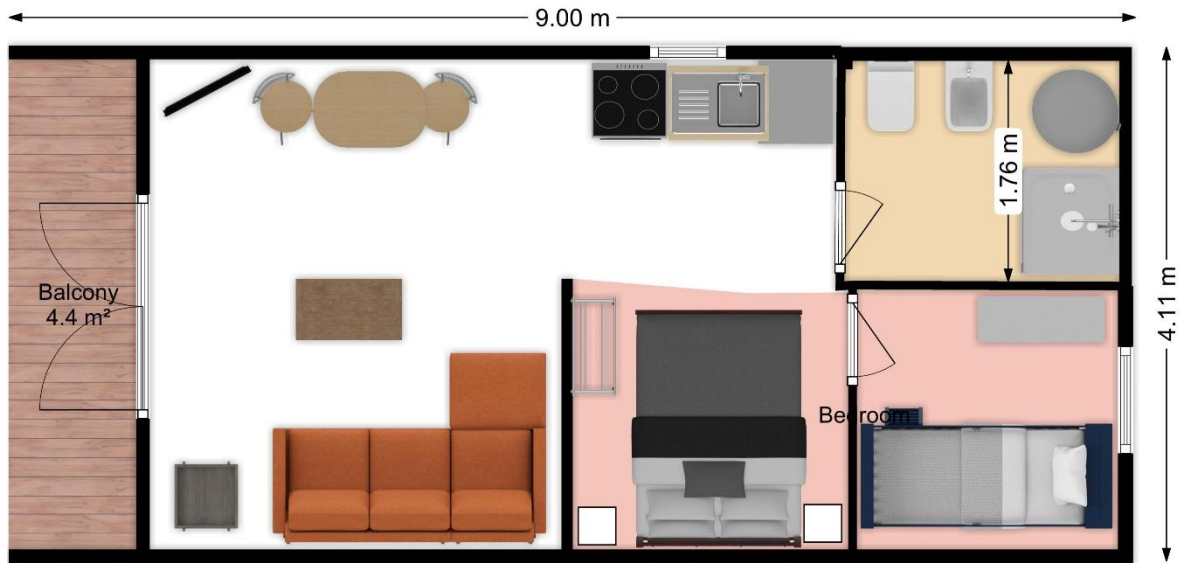
For Larch cladding add + £1,750

Curtains on the panoramic version are £650 + VAT extra.

Panoramic Glamping Super-pod 4m x 12m (- 8m) models

Family Model

Slightly larger with separate sleeping for the family this offers an economic route to family luxury glamping and accommodation.

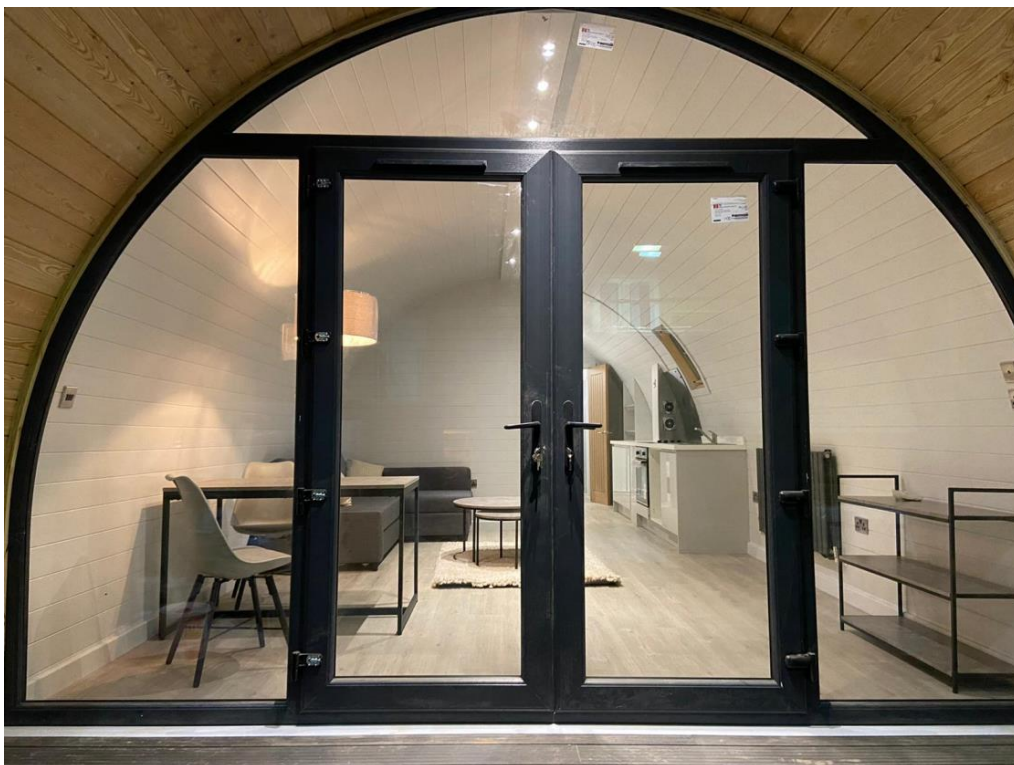


Price £29,631 + reduced VAT & delivery (£27,352 with no furniture)

For Larch cladding add + £2,175

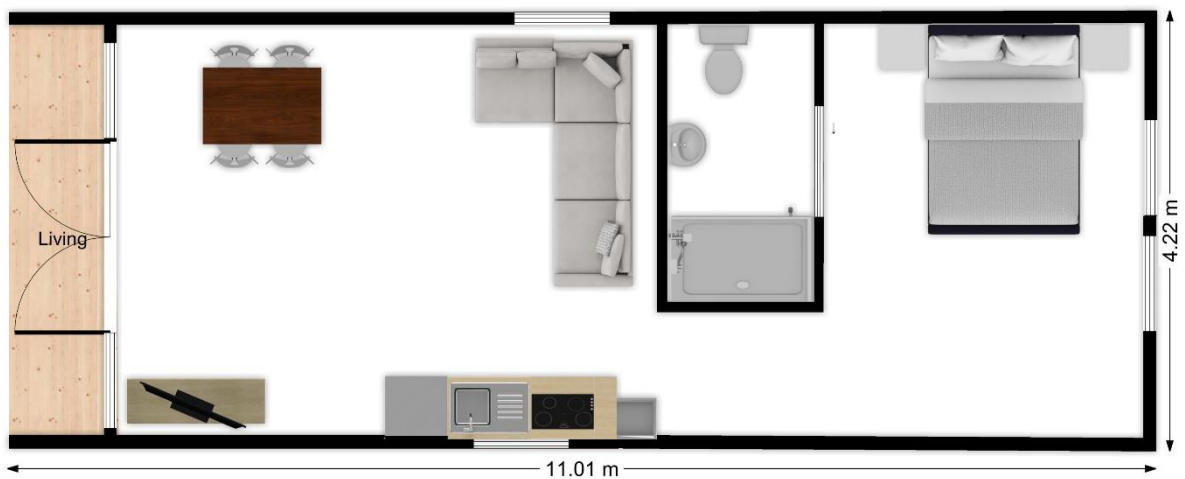
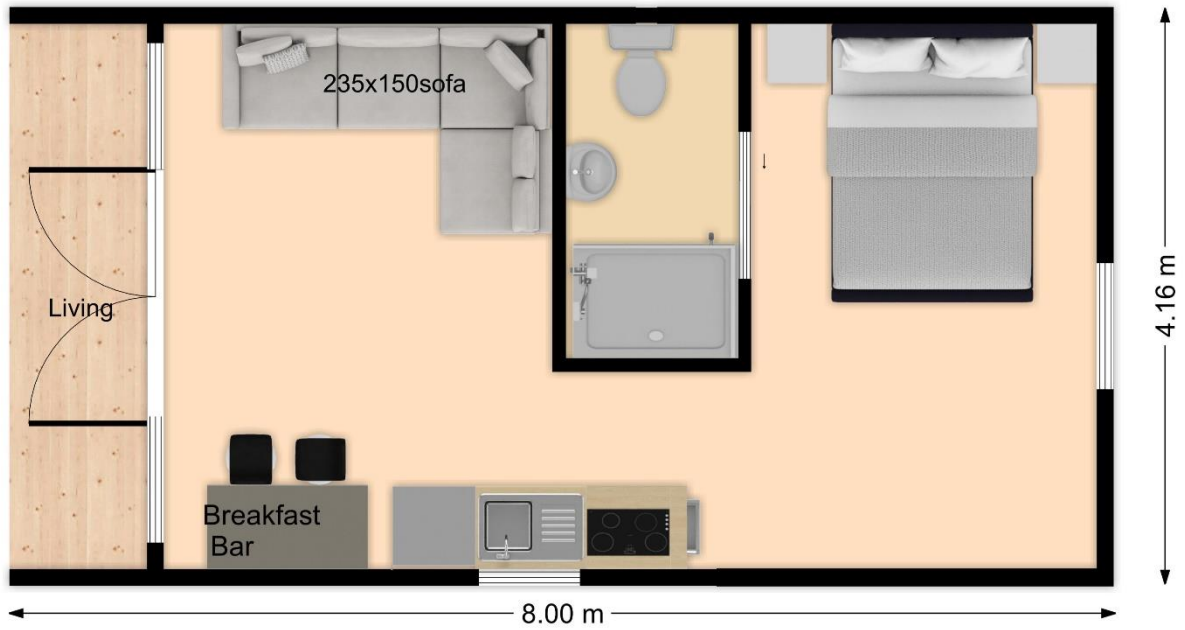
Curtains on the panoramic version are £650 + VAT extra.

Alternative layouts for hotel room, no kitchen.



Panoramic Glamping Super-pod 4m x 12m (- 8m) models

Further Layout options..



Panoramic Glamping Super-pod 4m x 12m (- 8m) models

Specification

This factory built unit is delivered to site on a mobile home chassis with wheels for easy movement and siting. It is factory assembled from structurally assessed CNC components. The structure contains insulation in the floor and the walls, added multifoil insulation around the walls and diffusion membrane whilst externally the fascia walls are clad in granulated steel tiles (with a Larch option) the internal wall coverings are completed with the attractive hand painted plank cladding in your choice of colour.

Doors & Windows

All windows and doors are high class residential quality and double glazed. Non Velux windows contain locking systems for security and comfort. This unit can have velux style windows in a number of areas allowing blinds to be fitted. We can supply blinds to suit.

Walls & Roof

External fascia cladding is Siberian Larch, whilst the roof is either the long life and attractive Metrotile (or equivalent) granulated steel panels with 40 year warranty or the natural Larch as shown in the pictures. Internally the roof can have an attractive hand decorated planked ceiling giving cavernous and luxury space.

Insulation

The unit is fully insulated across the floor (100mm Knauf), walls and roof (100mm Knauf) with a layer of multi foil backed insulation on all wall and roof areas.

Electrics

Electric sockets, switches etc are supplied and fitted. We will work with you to define your electrical requirements if you have special requirements.

Bathroom

The bathroom is supplied with vanity basin, mirror, toilet and full shower cubicle. The showers are either 800 or 900mm quadrant shower cabins or built in as shown. Normally an electric hot water heater is installed with the option to have an LPG boiler if required.

Kitchenette

A 1000mm functional Elfin kitchenette unit with sink, 2 ring hob, drawers and cupboards allow the accommodation to take on self sufficiency. A fridge and microwave are included in the unit. This model can accommodate a larger kitchen unit if required. Larger more bespoke kitchens available.

Alarms

We supply '2 in 1' Kidde combined CO2 and Fire alarms to be fitted on arrival. The alarm is activated by lithium battery with 10 year life expectancy.

Note: materials, layouts and styles may change and this includes features added by the customer.